

FIRE TRUCKS AND EMERGENCY VEHICLES



AMT788 FORD INTERCEPTOR POLICE CAR
AVAILABLE ONLINE WHERE SUPPLIES LAST!
 Ready for round-the-clock emergencies... super-powered with Boss 429 Interceptor V-8 engine for high-speed rescue or pursuit! Authentically-detailed equipment includes shortwave radio, shotgun, push bar, flasher beacons, antennas, siren/loudspeaker unit. Realistic police decals. Vital member of our public service team!



AMT1053 AMERICAN LA FRANCE 1000 SERIES PUMPER
AVAILABLE NOW!
 Super-detailed 1/25-scale reproduction of new pumper from America's best-known name in fire-fighting apparatus. Model measures over 12 inches in length; has over 300 parts – well over 100 in "chrome". Features detailed "Twinflow" pump, Detroit Diesel engine, vinyl hose tubing and six vinyl tires.



AMT980 AMERICAN LA FRANCE 1000 SERIES AERO CHIEF
AVAILABLE ONLINE WHERE SUPPLIES LAST!
 Over sixteen inches of 1/25-scale detail... two-section aerial boom extends from rotating rear-mounted turntable. Operating stabilizers; Detroit Diesel V-8 engine; more than 300 parts, with over 100 in brilliant "chrome". Six vinyl tires; authentic fire department decals.



LADDER CHIEF

1000 series

REAR MOUNTED AERIAL LADDER TRUCK



AMT812 (White) / AMT851 (Red) CHEVY® RESCUE VAN
AVAILABLE ONLINE WHERE SUPPLIES LAST!
 Retro modern Chevy® Van completely outfitted for police or fire department emergency work, including shortwave communications equipment, litter, oxygen, fire extinguishers, special antennas, flashers and siren. Super detailed chassis with V-8 engine; wheel and tire options. Opening hood; optional windows or solid side panels; authentic police and fire decals!



HOT LINE

Complete your SMOKN' HOT collection of fire-fighting, police and fire service support vehicles! Super-detailed in constant 1/25 scale, featuring three mighty firefighters from American La France, the greatest name in fire equipment. A milestone in modeling, these are truly kits designed to capture the imagination of hobbyists of all ages!



AMT1162 CHEVROLET® FIRE CHIEF
AVAILABLE NOW!
 First to the scene of the fire... AMT's Chief's car is fully equipped to direct the operation of the fire-fighting team! Includes shortwave communications equipment, roof-mounted flasher unit, combination siren and loudspeaker. Detailed 454 V-8 engine assures power for any emergency. With authentic fire department decals.

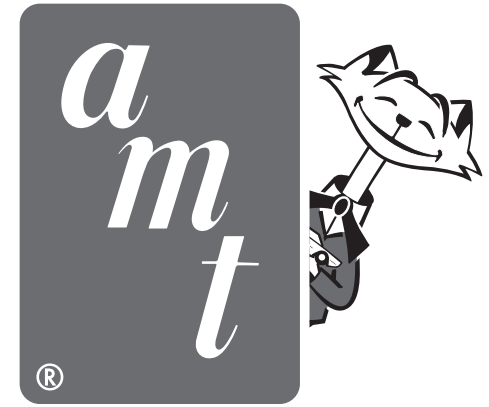




Ford Motor Company Trademarks and Trade Dress used under license to Round 2, LLC. GENERAL MOTORS Trademarks used under license to Round 2, LLC. All rights reserved. INTERNATIONAL®, and other International truck trademarks are licensed by INTERNATIONAL TRUCK INTELLECTUAL PROPERTY COMPANY. Firestone and F Shield Logo are registered trademarks of Bridgestone Brands, LLC and are used with permission. Other names and trademarks used under license to Round 2, LLC or by permission. AMT and design is a registered trademark of Round 2, LLC. ©2020 Round 2, LLC, South Bend, IN 46628 USA. Product and packaging designed in the USA. Made in China. All rights reserved.

round2models.com

MORE GREAT KITS FROM



round2models.com

AUTHORIZED INTERNATIONAL® PAYHAULER 350 MODEL KIT!

OVER 425 PIECES - 1/25th SCALE
MOLDED IN AUTHENTIC IN COLORS
MODEL SIZE: 14 1/2" LONG x 4 1/2" WIDE x 9 1/2" HIGH

INTERNATIONAL PAYHAULER 350 CONSTRUCTION TRUCK

MANY UNIQUE AMT FEATURES

AMT1209/06

SNOW PLOW
FORD LNT-8000

FEATURING:

- MOVABLE HEAVY DUTY 84" ONE WAY SNOW PLOW
- DETAILED SALT SPREADER
- AUTHENTIC DUMP BODY WITH THREE SECTION TELESCOPIC HOIST AND OPENING TAILGATE
- OVER 270 DETAILED PARTS

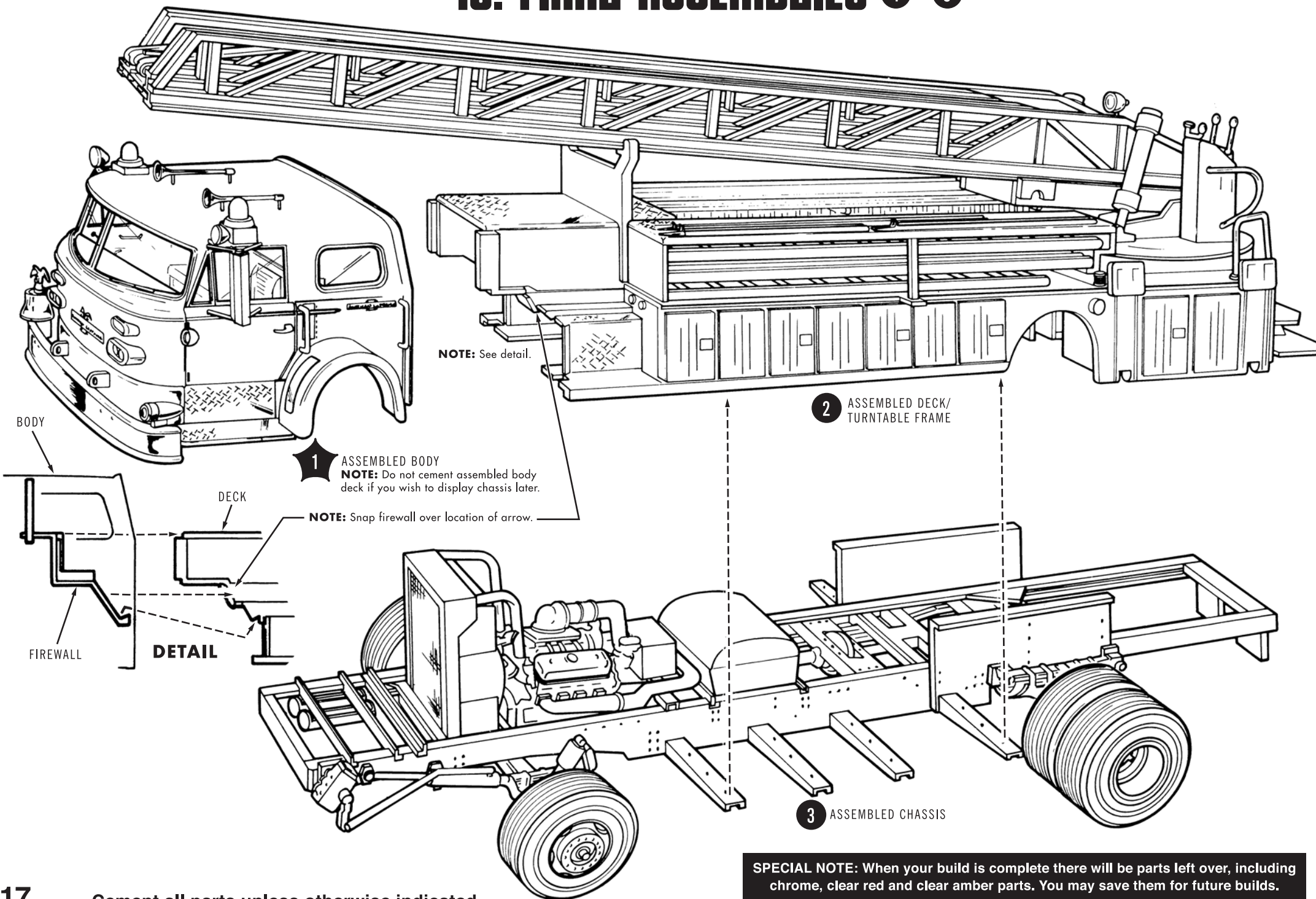
AMT1178/06

HAULAWAY TRAILER FIVE-CAR AUTOMOBILE TRANSPORTER

CITY TRANSPORTER

AMT1193/06

18. FINAL ASSEMBLIES ①-③



SPECIAL NOTE: When your build is complete there will be parts left over, including chrome, clear red and clear amber parts. You may save them for future builds.

BEFORE YOU BEGIN BUILDING . . .

You have purchased what we believe is the finest quality kit of its type available. Much time and effort have been spent to assure you of a product we can take pride in presenting, and which will give you enjoyment during and after its construction. Your finished model will reflect the few minutes spent reading these preliminary notes.

These assembly instructions have been carefully prepared to guide you through your model's construction in easy, understandable stages. Familiarize yourself with the overall procedure before beginning any actual assembly. Please remember the successful completion of your model depends on following each stage of the instructions on a step by step basis.

The only tools required are few and readily available: a sharp knife, a toothpick or pencil point for applying cement to small areas, and a few rubber bands for holding large parts in alignment while cementing. Use only cement—liquid or in a tube—which is made specifically for styrene plastics. Cement, by the way, will not bond two surfaces together unless both surfaces are free of paint or "chrome" plating—so be sure to scrape areas to be

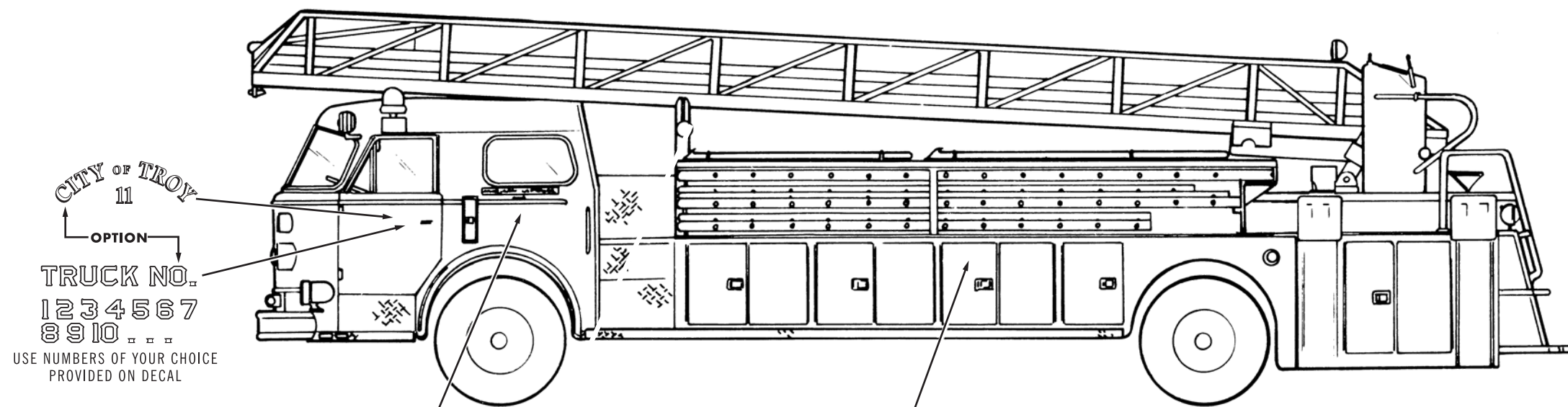
joined down to the bare plastic.

For convenience, and best appearance, non-plated assemblies (for example: engine block and cylinder heads, etc.) should be painted as a unit after cement has dried completely. Again, use only paint—spray or brushing type—made for styrene plastic models. The correct cement and paint can be purchased where you obtained this kit. Choice of colors to paint your model is your decision; however, the illustrations on the kit box may be used as a guide.

The parts illustrated in each assembly are numbered in sequence of assembly. "Chrome" plated parts are indicated by the letter "C". Test-fit parts together before cementing, and carefully trim any excess plastic or mold lines from the joining surfaces to obtain a perfect fit. Cement all parts unless otherwise indicated.

Above all—take your time and have fun! Don't overlook any of the tips and notes included. If necessary, check off each part on the instruction sheet as you proceed, to be sure you haven't overlooked a step. We hope you get as much enjoyment in building your model as we had in preparing it for you!

DECAL PLACEMENT

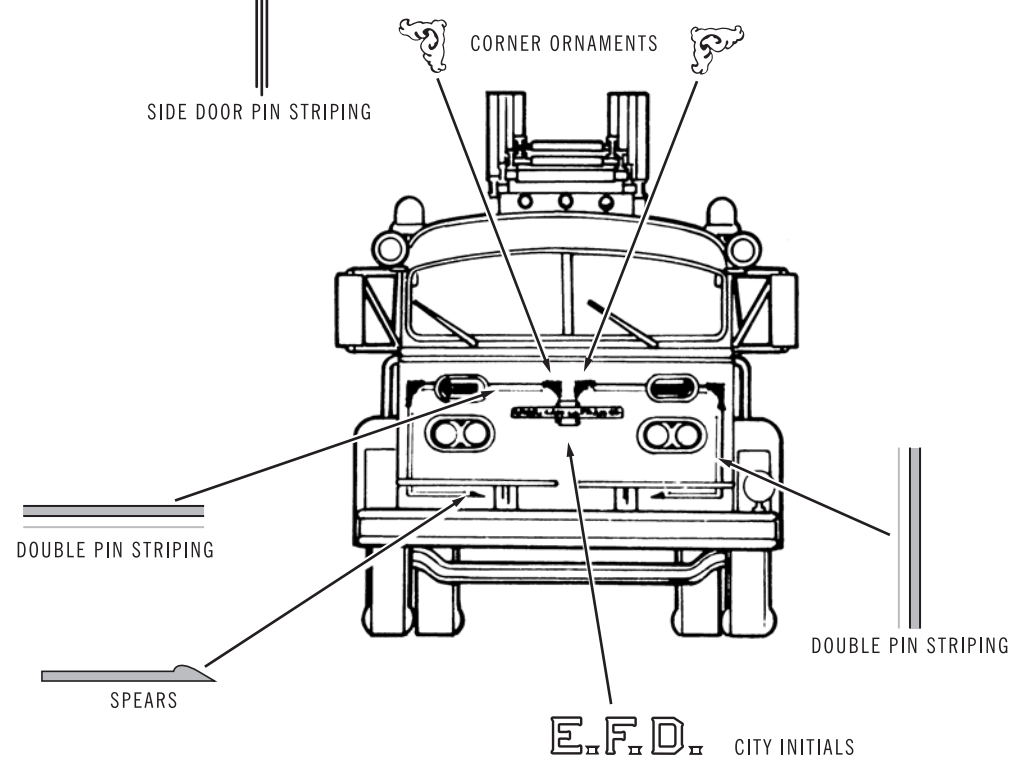


CITY OF TROY
11
OPTION
TRUCK NO.
1 2 3 4 5 6 7
8 9 10
USE NUMBERS OF YOUR CHOICE
PROVIDED ON DECAL

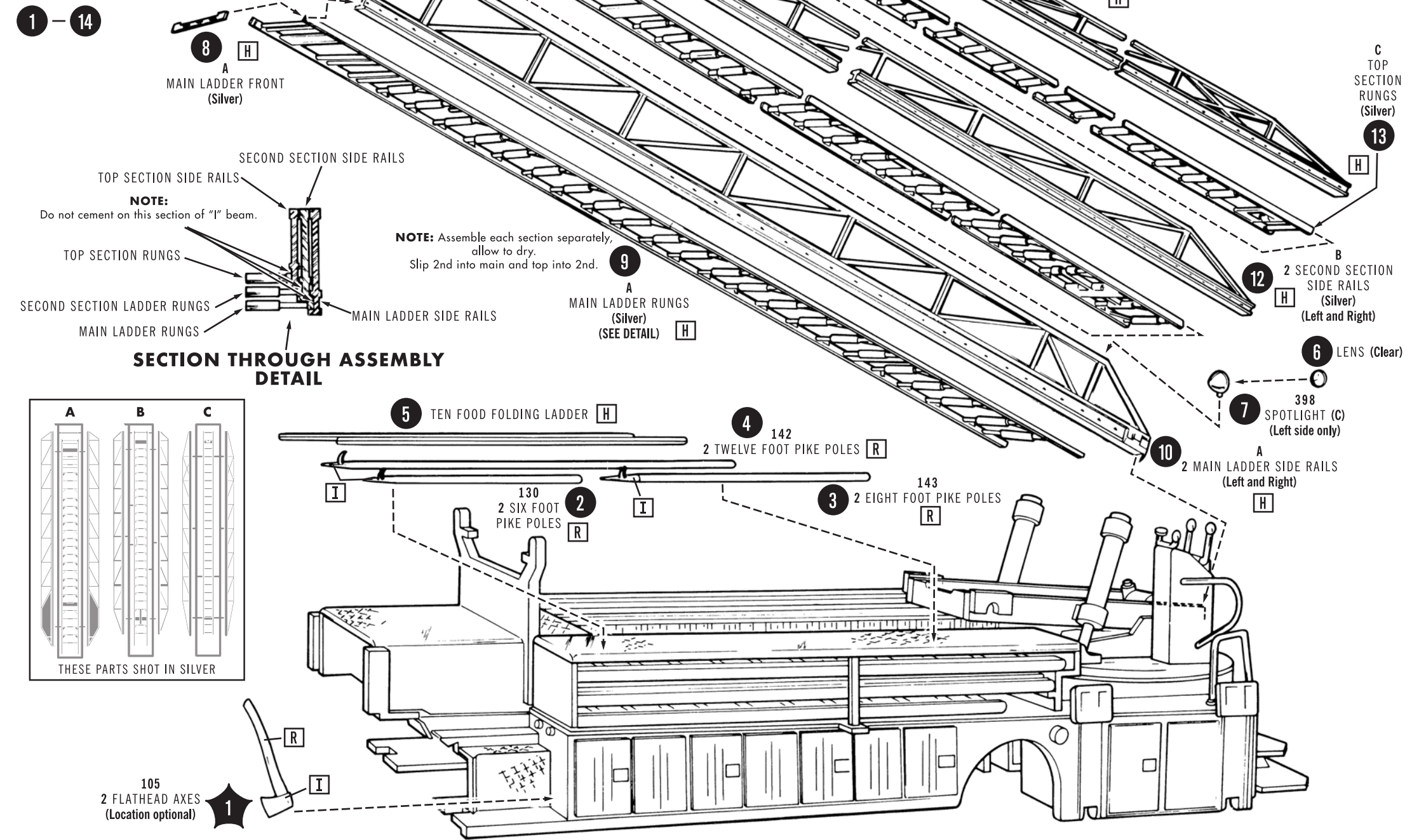
**ELMIRA
FIRE DEPARTMENT**
USE ONE OF THESE CITY NAMES
OR MAKE YOUR OWN TOWN'S NAME
FROM THE ALPHABETS PROVIDED ON DECAL.

PAINT COLORS

A	Black	L	Amber	W	Transparent Blue
B	Flat Black	M	Transparent Amber	X	Alpine Green
C	Semi-Gloss Black	N	Red	Y	Dark Green
D	White	O	Transparent Red	Z	Gray
E	Flat White	P	Orange	FC	Fender Color
F	Silver	Q	Yellow	CC	Chassis Color
G	Chrome (Bright Silver)	R	Tan	TC	Truck Cab Color
H	Aluminum	S	Dark Brown	▲	Semi-Gloss
I	Steel	T	Lt. Blue	△	Gloss
J	Brass	U	Med. Blue	▲	Metallic
K	Gold	V	Dark Blue		

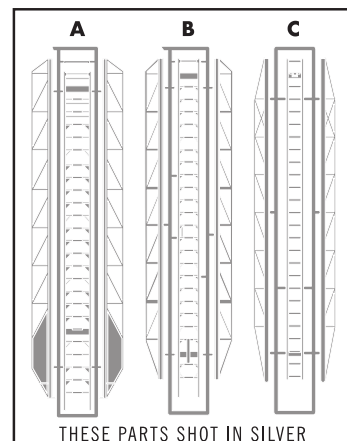


18. AERIAL LADDER ASSEMBLY



1 - 14

**SECTION THROUGH ASSEMBLY
DETAIL**

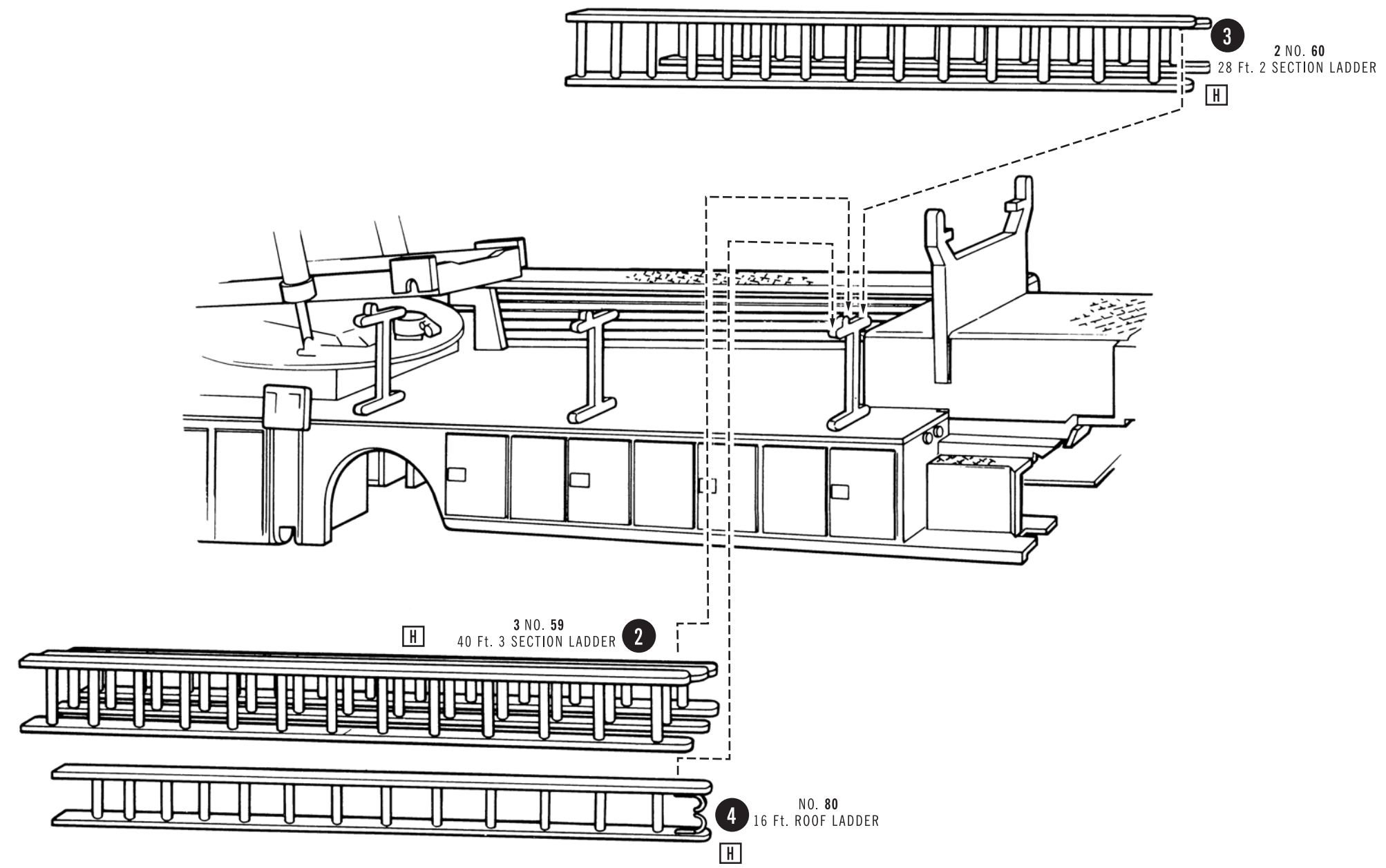


105
2 FLATHEAD AXES
(Location optional)

Cement all parts unless otherwise indicated.

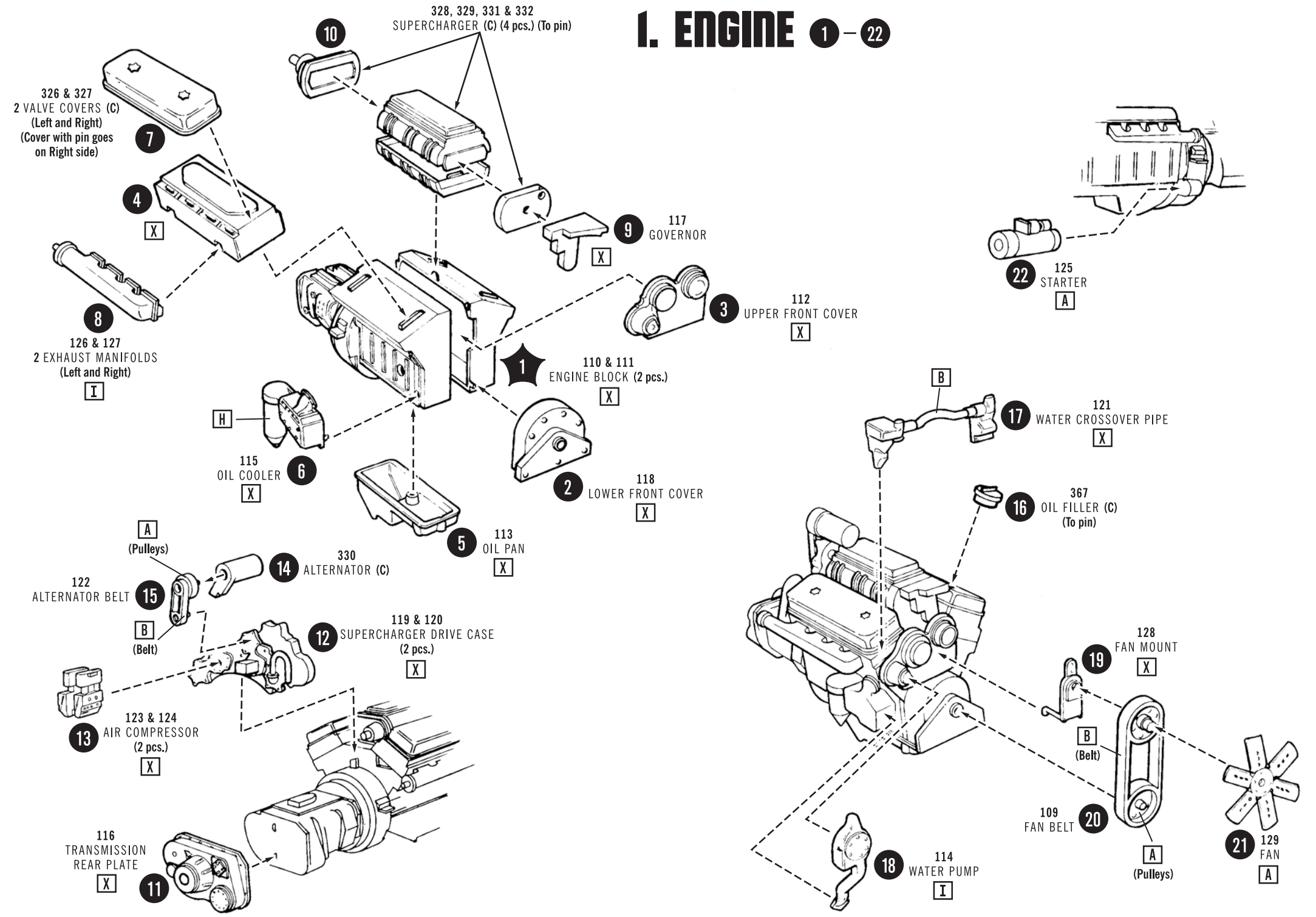
16. LADDER ASSEMBLY (Right side only) 1-4

1 NOTE: Ladders are numbered. Install ladders with the same number as sets. (Cementing ladders together is optional).



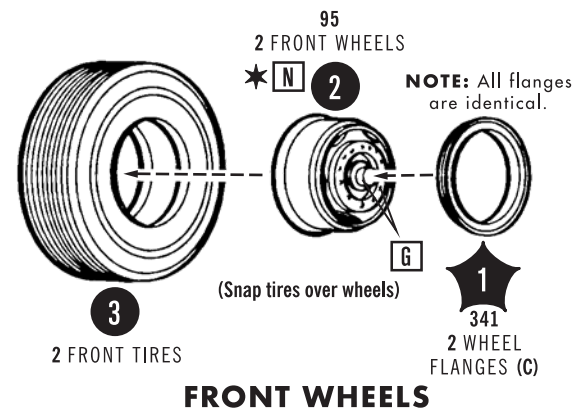
Cement all parts unless otherwise indicated.

1. ENGINE 1-22

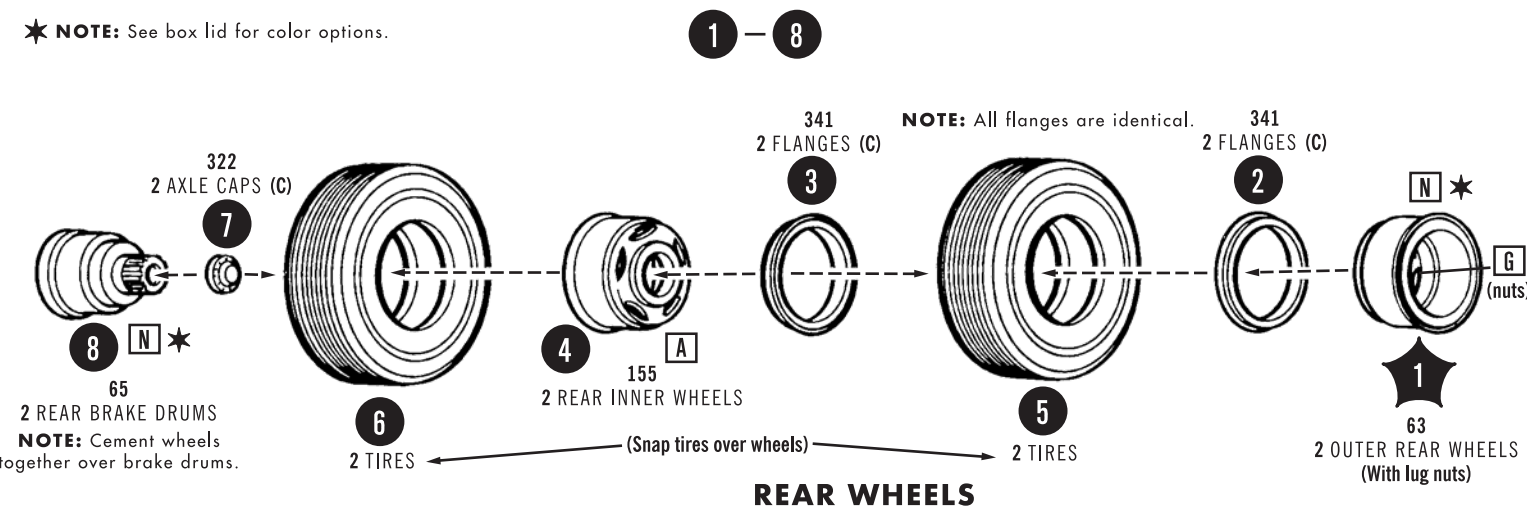


Cement all parts unless otherwise indicated.

2. WHEELS 1-3

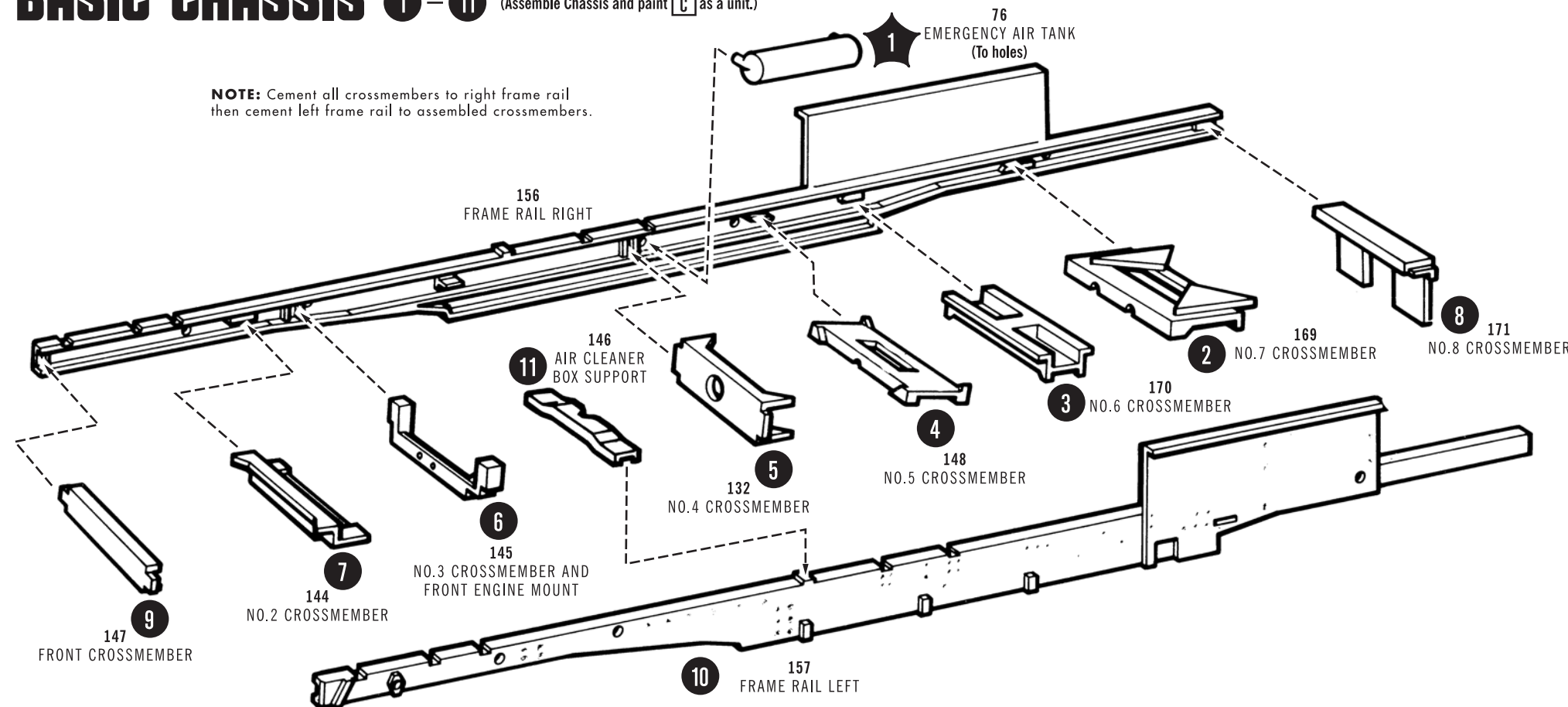


* **NOTE:** See box lid for color options.



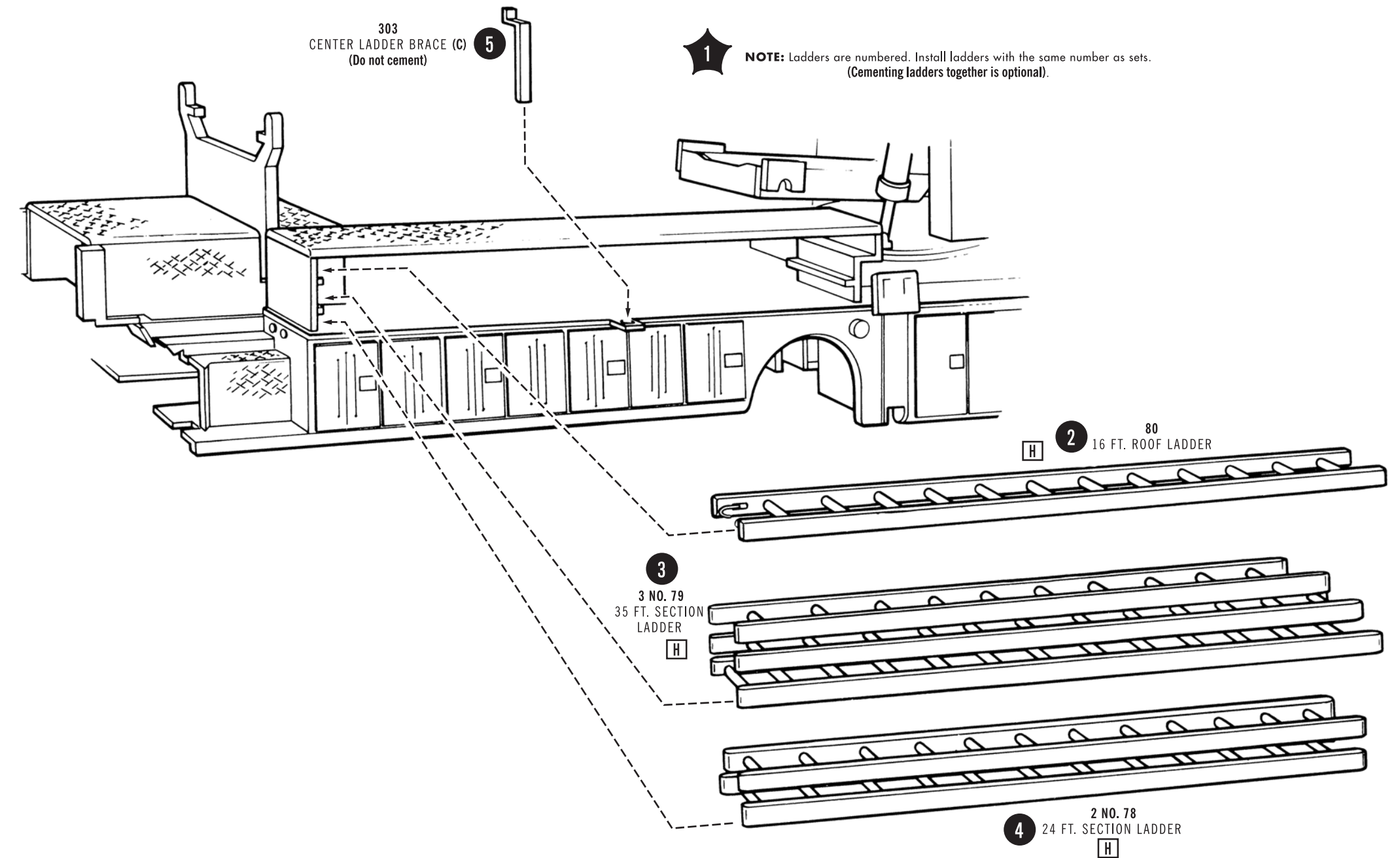
3. BASIC CHASSIS 1-11

(Assemble Chassis and paint [G] as a unit.)



Cement all parts unless otherwise indicated.

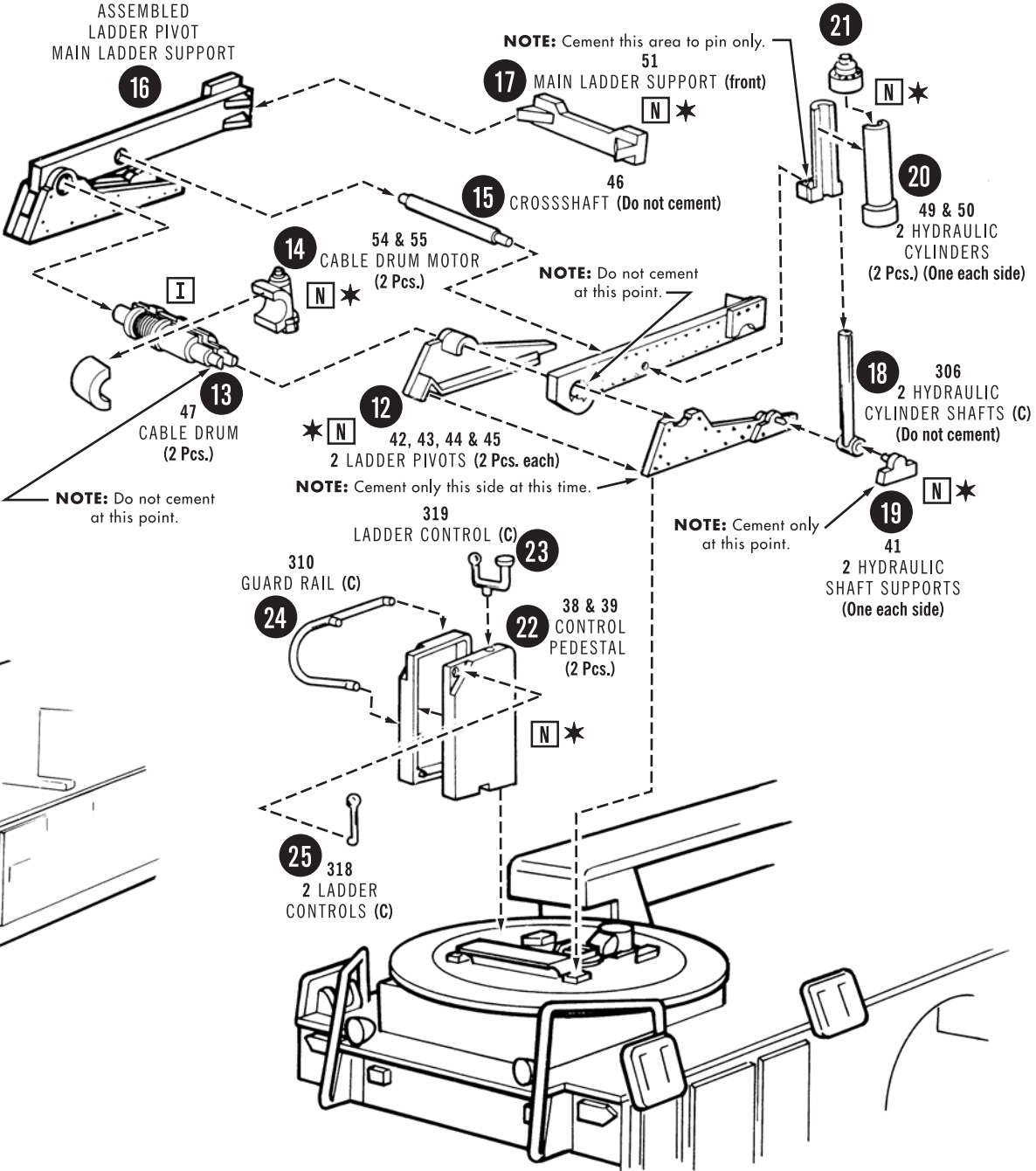
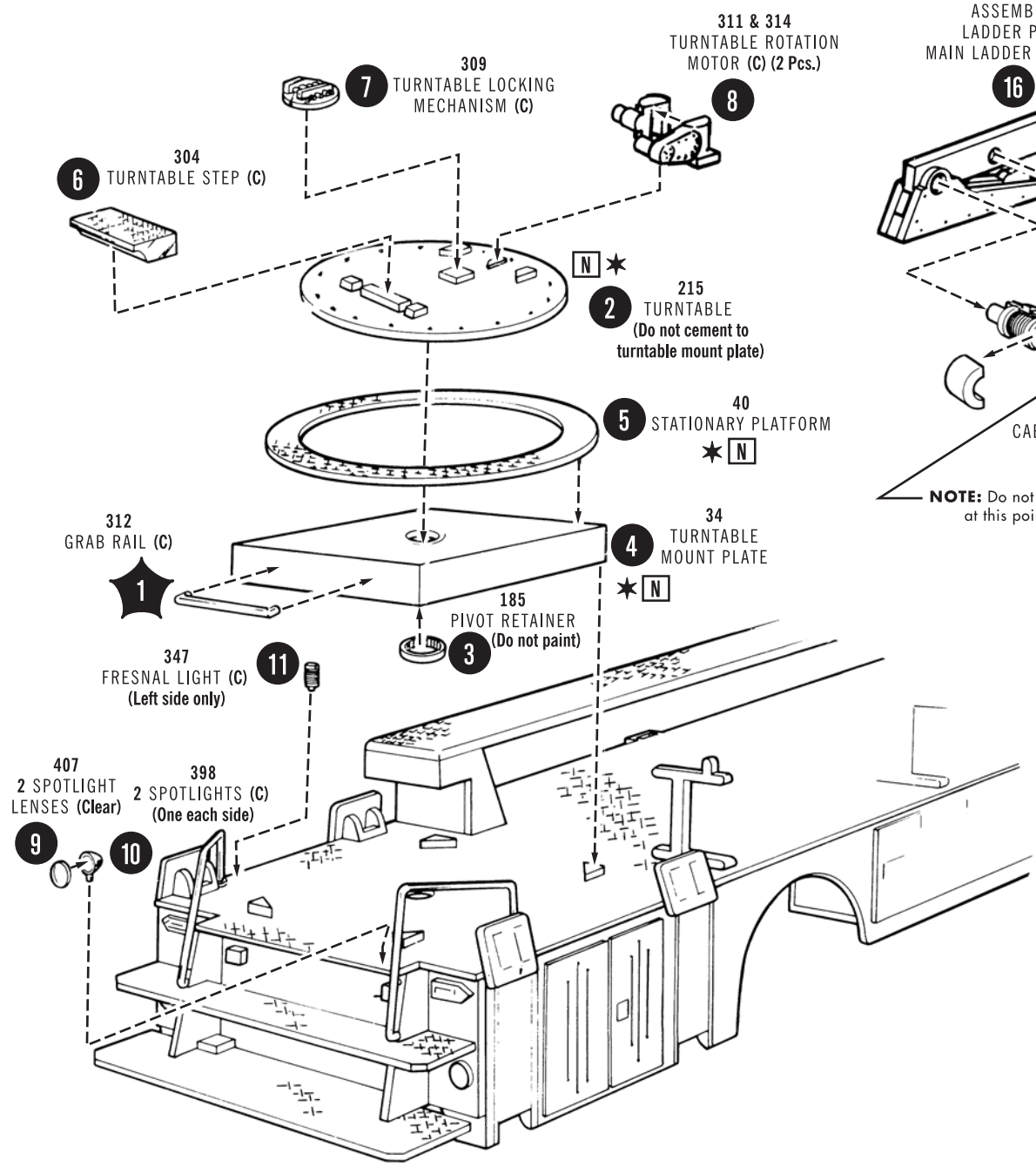
15. LADDER ASSEMBLY (Left side only) 1-5



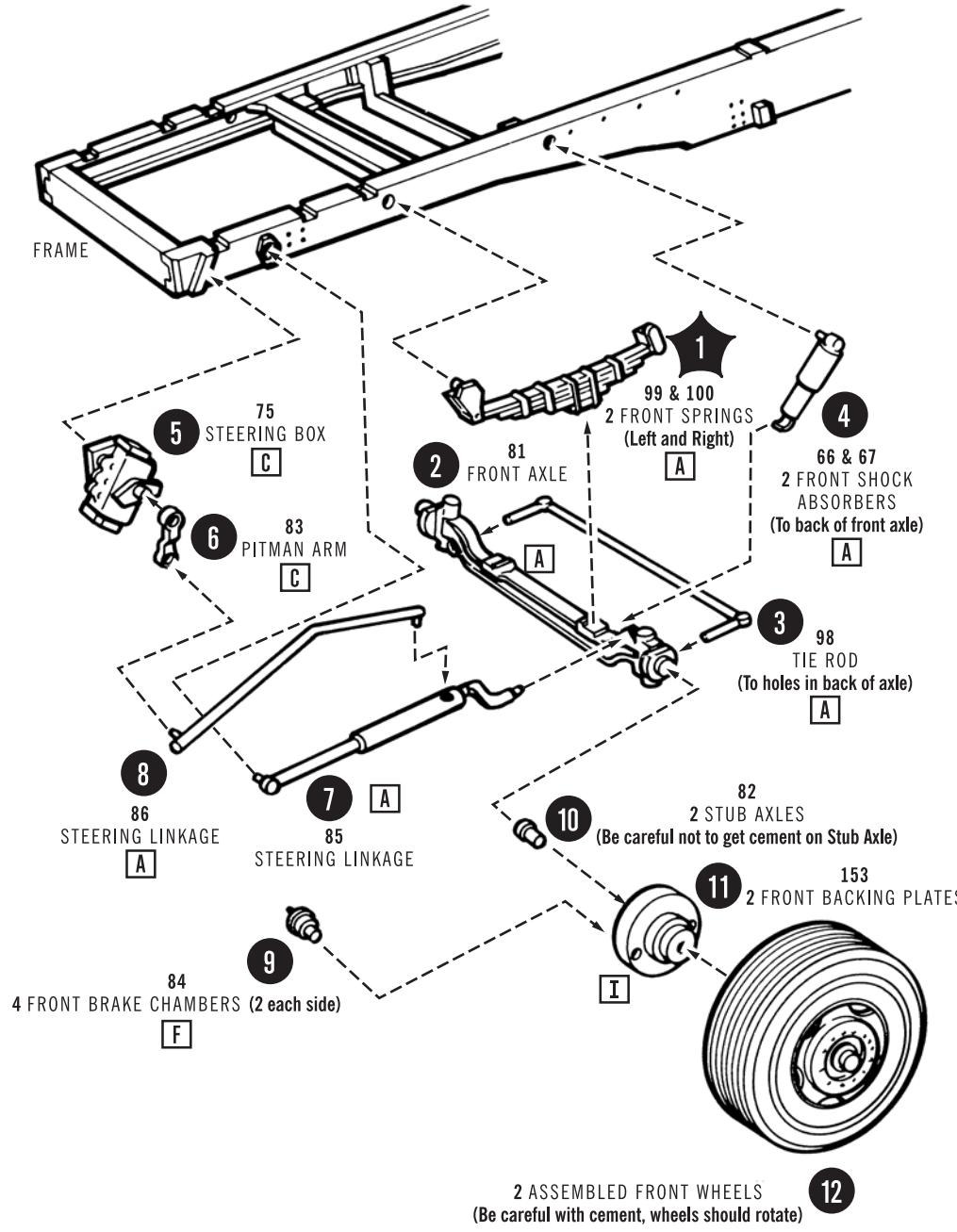
Cement all parts unless otherwise indicated.

14. TURNTABLE ASSEMBLY 1-25

★ NOTE: See box lid for color options.

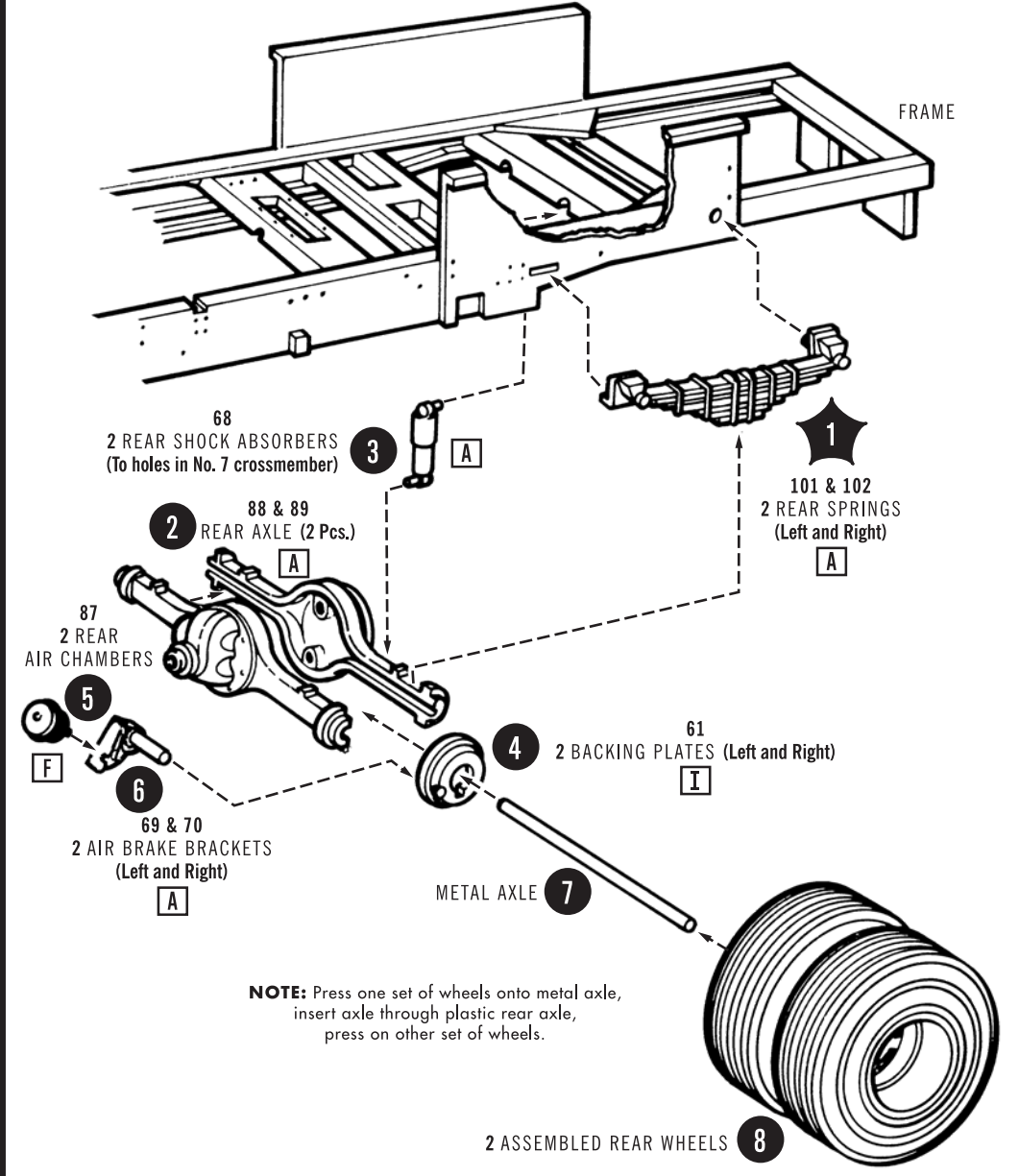


4. FRONT AXLE 1-12



Cement all parts unless otherwise indicated.

5. SPRINGS AND REAR AXLE 1-8

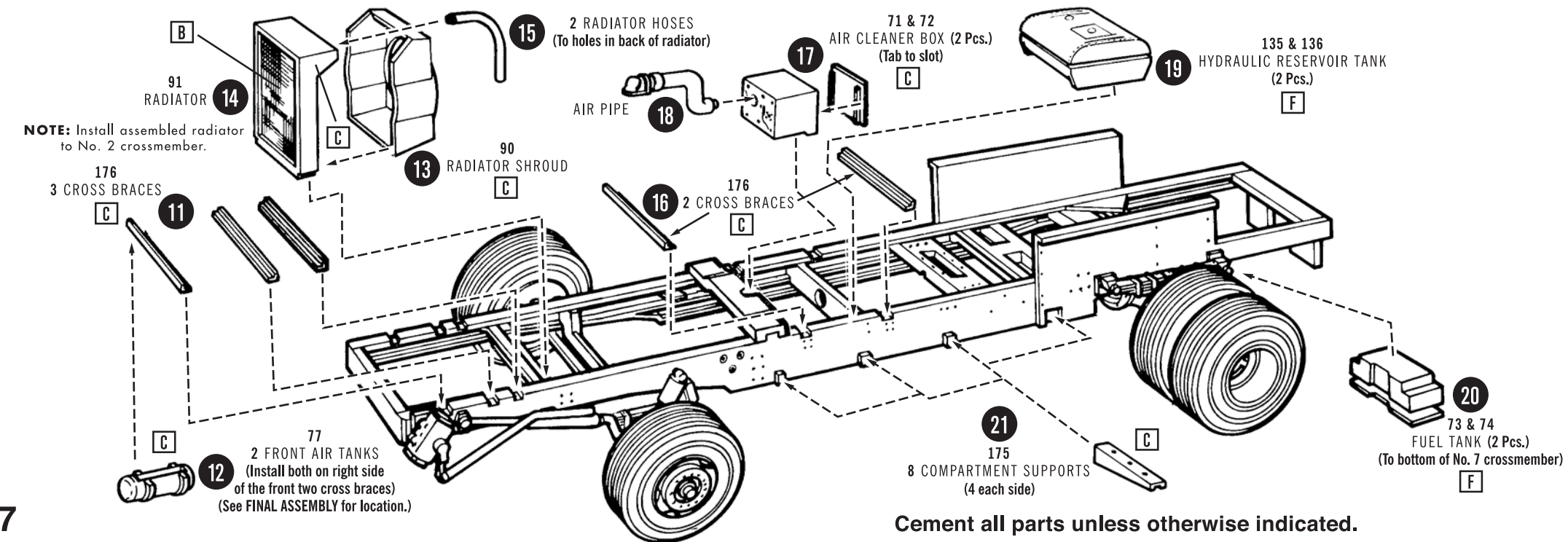
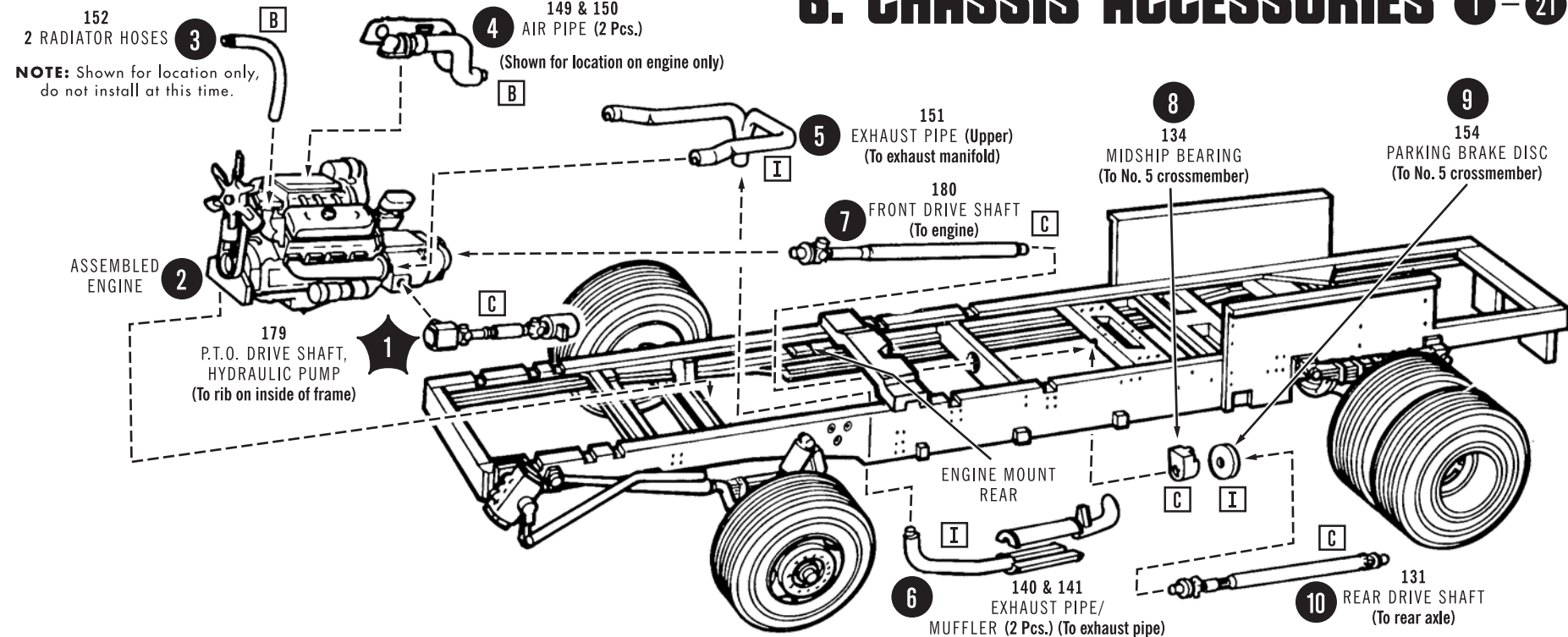


Cement all parts unless otherwise indicated.

13 Cement all parts unless otherwise indicated.

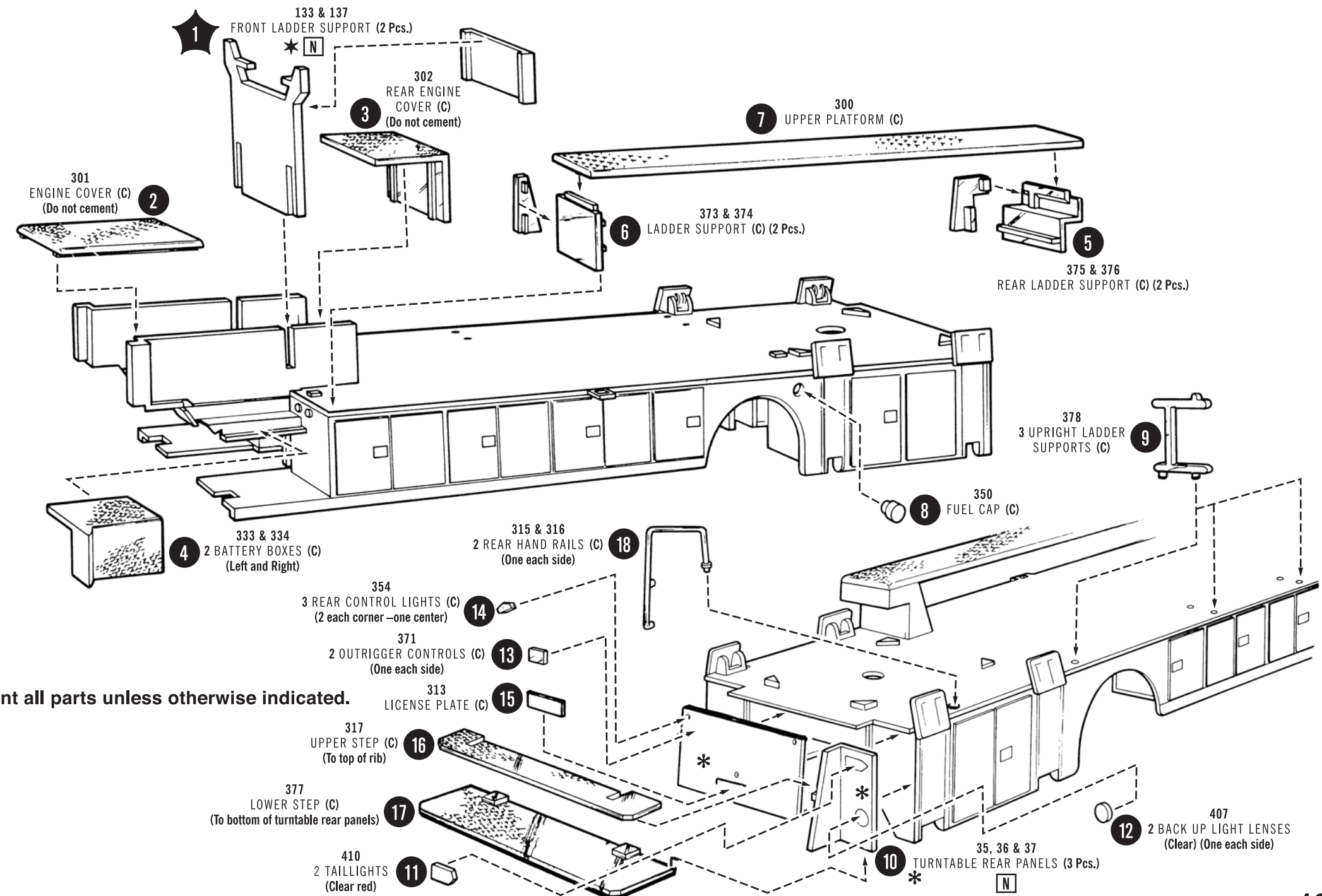
6

6. CHASSIS ACCESSORIES 1 - 21

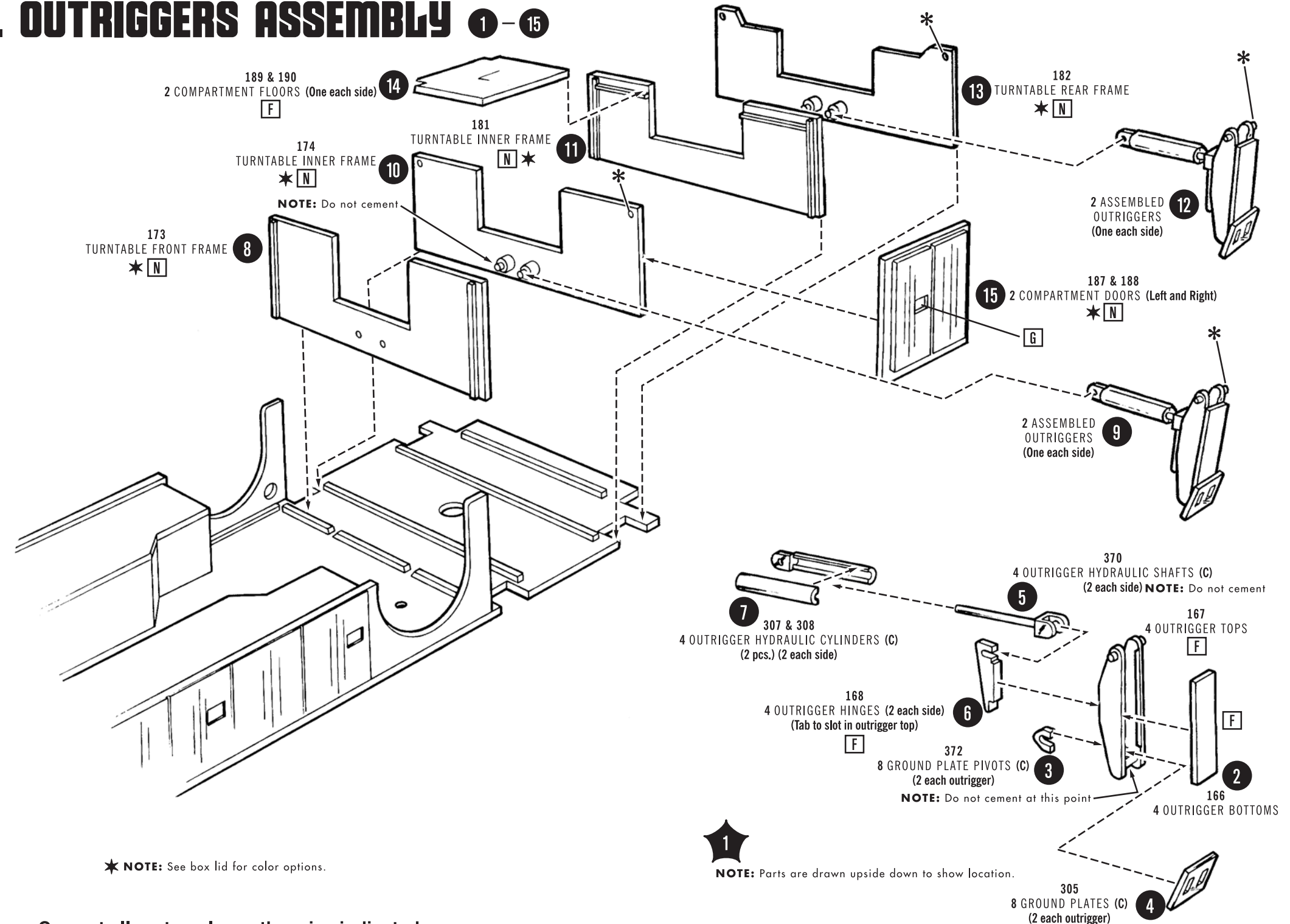


6. DECK COMPONENTS 1 - 18

★ **NOTE:** See box lid for color options.



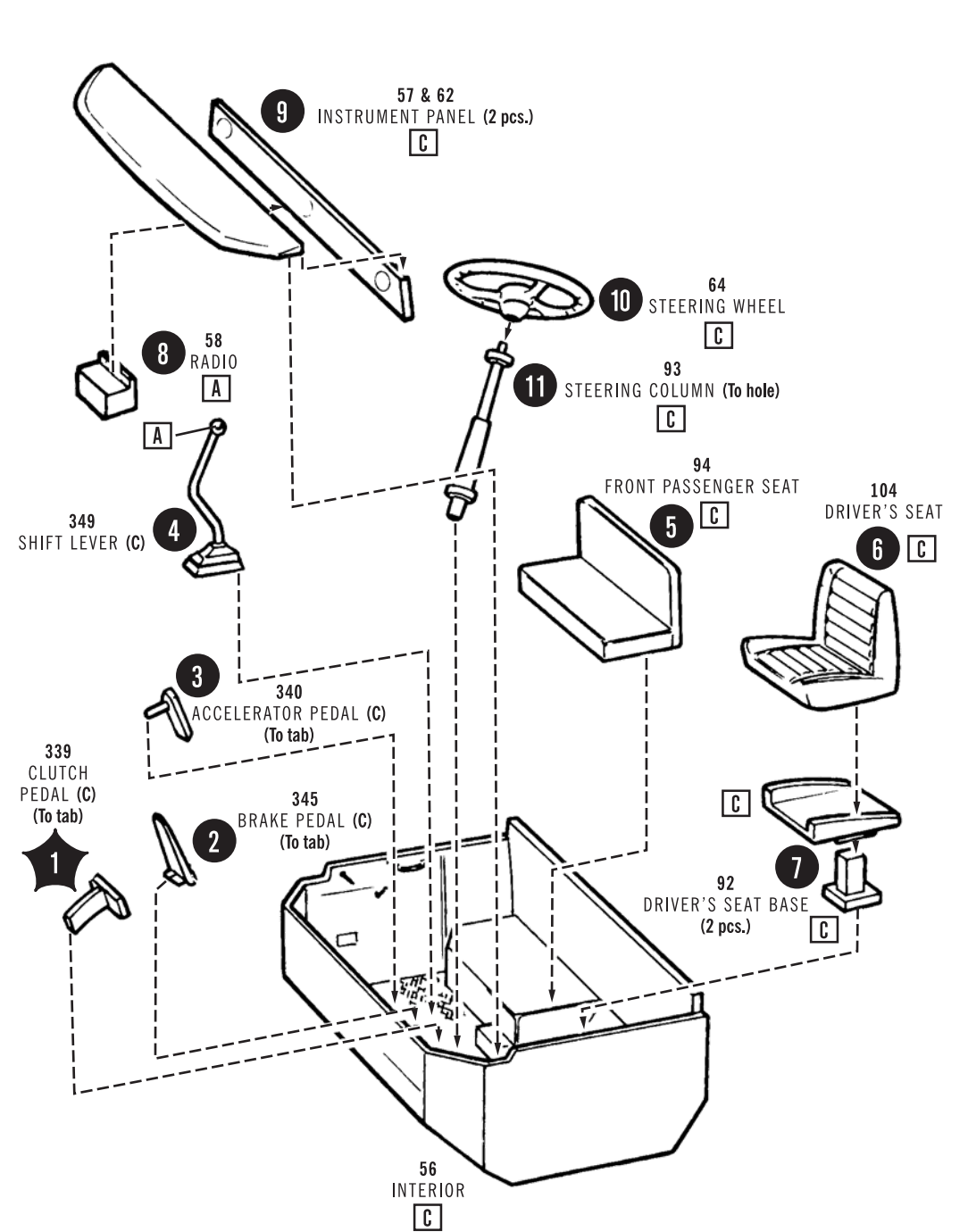
12. OUTRIGGERS ASSEMBLY 1-15



11 Cement all parts unless otherwise indicated.

7. INTERIOR 1-11

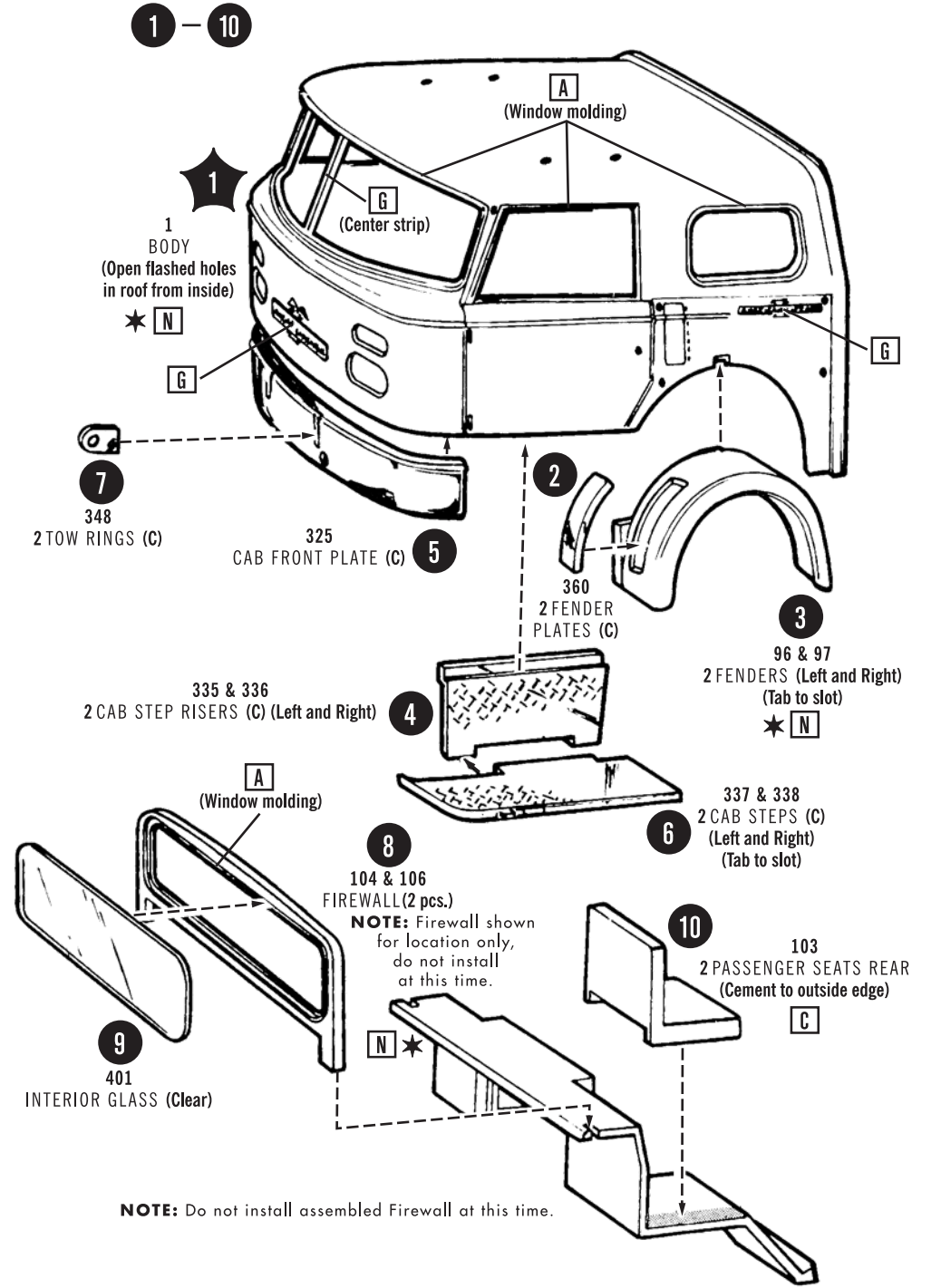
NOTE: Shown for assembly only, do not install at this time.



Cement all parts unless otherwise indicated.

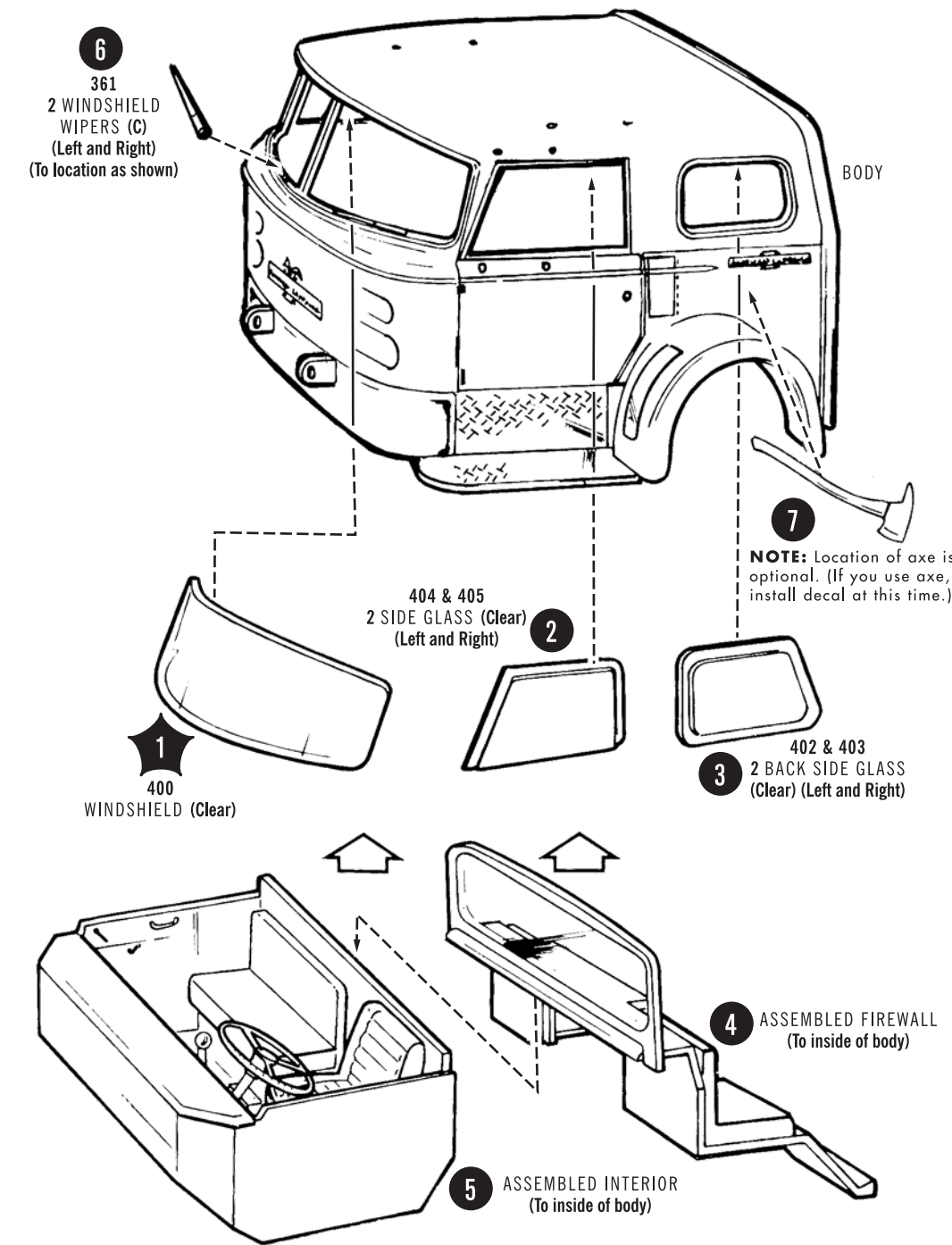
8. BASIC BODY 1-10

* NOTE: See box lid for color options.



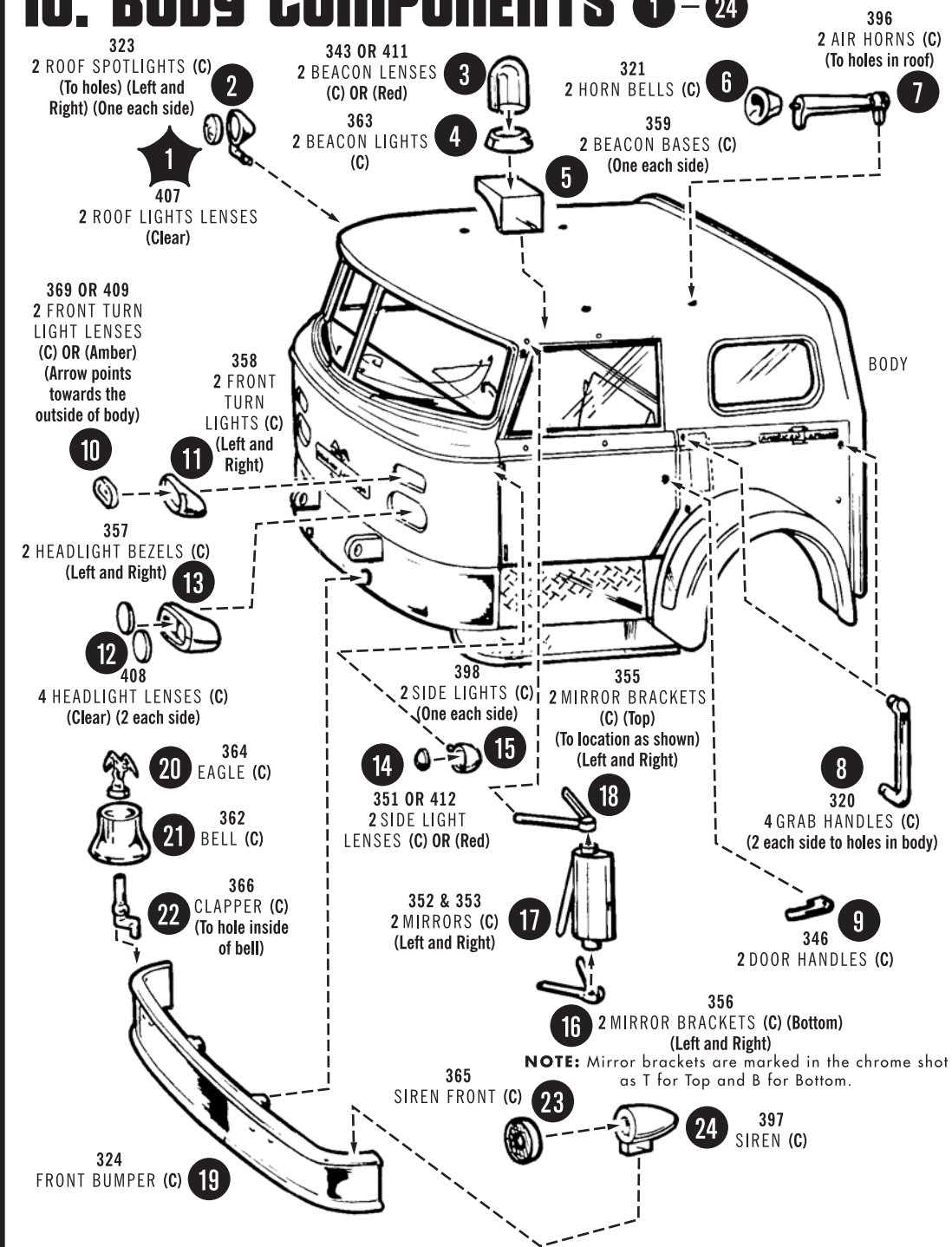
Cement all parts unless otherwise indicated.

9. INTERIOR TO BODY 1-7



9 Cement all parts unless otherwise indicated.

10. BODY COMPONENTS 1-24



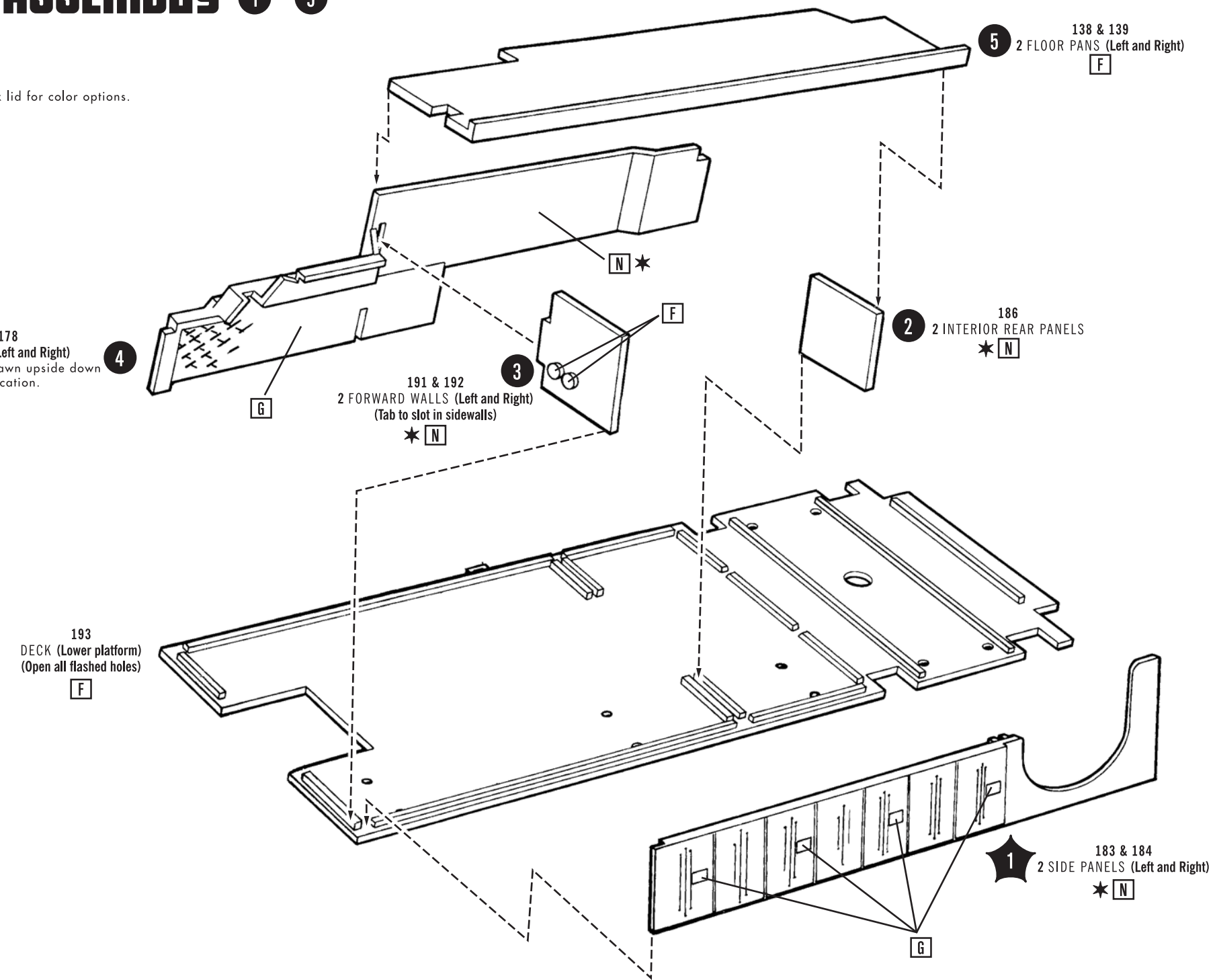
10 Cement all parts unless otherwise indicated.

11. DECK ASSEMBLY 1-5

★ **NOTE:** See box lid for color options.

177 & 178 2 SIDEWALLS (Left and Right)
NOTE: Parts are drawn upside down to show location.

193 DECK (Lower platform) (Open all flashed holes)



11 Cement all parts unless otherwise indicated.