

STEVE MCGEE'S



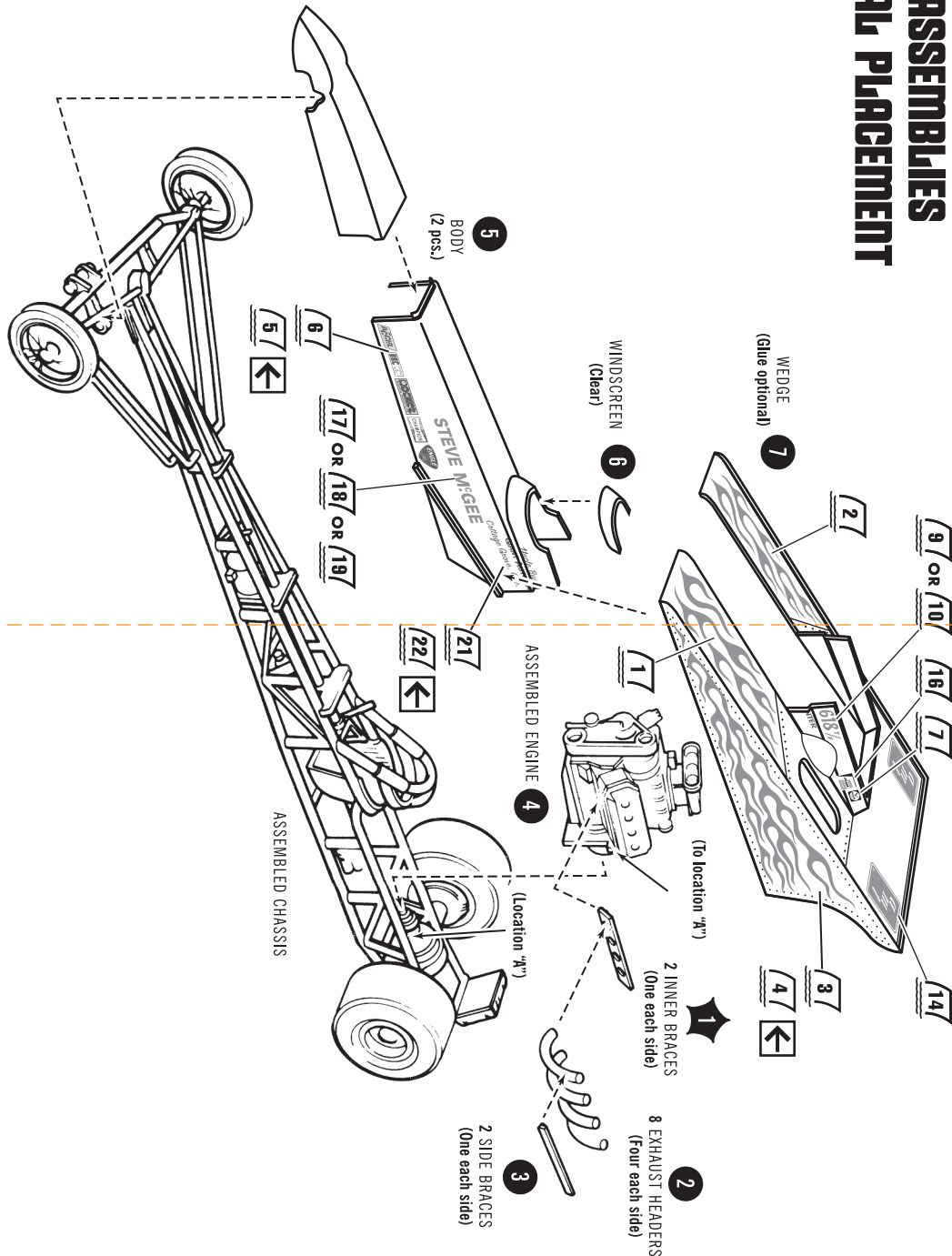
BLACK BEAUTY AA FUEL DRAGSTER

READ THIS BEFORE YOU BEGIN

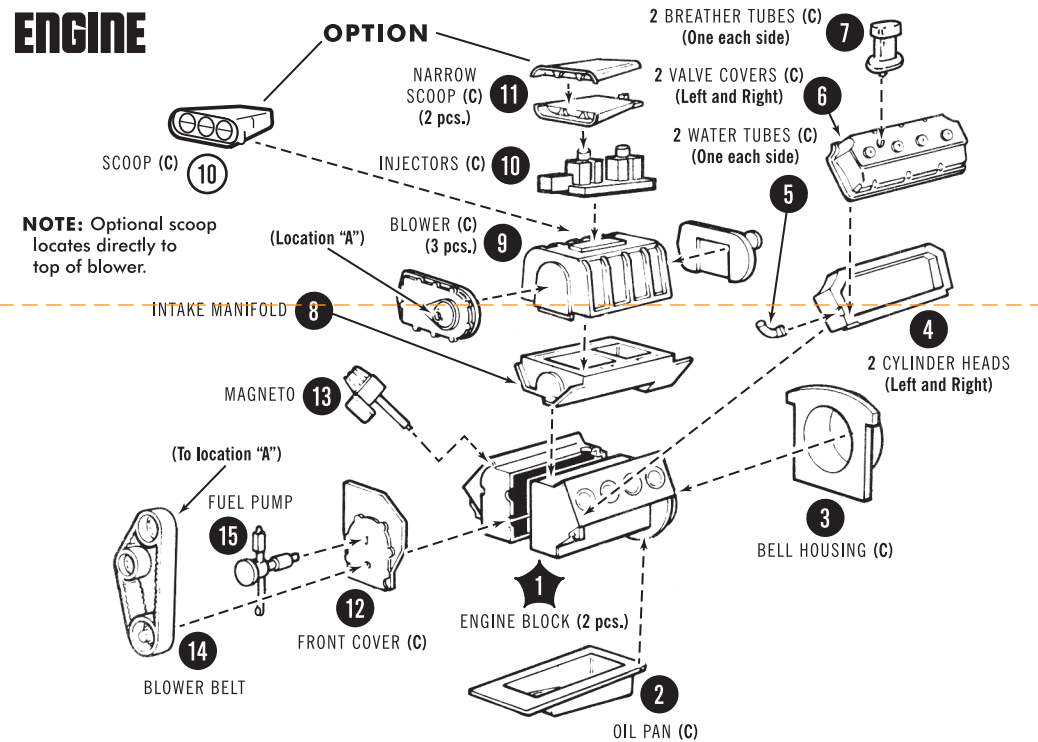
Look over this instruction sheet carefully before you begin building. Following the assembly instructions and "TEST FIT" the parts without cementing. This will familiarize you with the location of parts.
For best results, the various sub-assemblies and components should be painted before any "CHROME" parts are attached. For example: When attaching "NON CHROME" engine parts, it is best to cement them in place and paint as a unit. "CHROME" PARTS ARE INDICATED BY (C).
AMT® kits are molded from the finest high-impact styrene plastic. Use

only paint and cement made for styrene. Trim excess plastic from parts before joining. When attaching "CHROME" or painted parts, scrape plating or paint away where parts are to be joined. Cement all parts unless otherwise indicated by the instructions. Use just enough cement to join parts and be careful not to smear cement on exposed surfaces.
Built according to the instructions on this sheet, you should have no trouble assembling your kit. Just FOLLOW THE NUMBERS as the instructions are numbered in order of assembly.

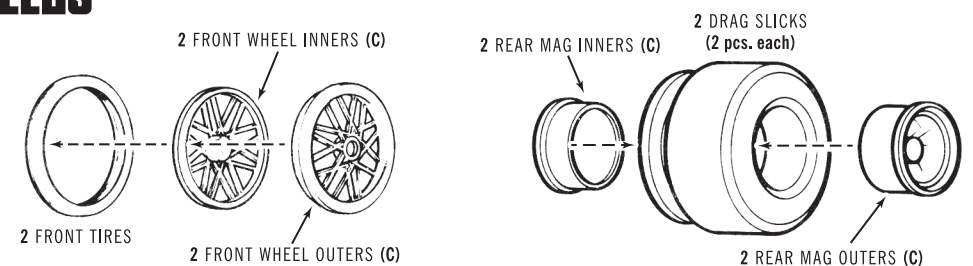
FINAL ASSEMBLIES & DECAL PLACEMENT



ENGINE



WHEELS



CHASSIS

